

# NS1750D

Rumpled Quilt Skins  
Okotoks Cochrane

## Top NEW Features

- New look
- Larger, colour LCD screen with improved resolution
- Larger work area
- Longer J foot and feed dogs for an awesome sewing experience
- All new embroidery design patterns (including Disney!)
- Design combination
- Launch date: October 2017\*



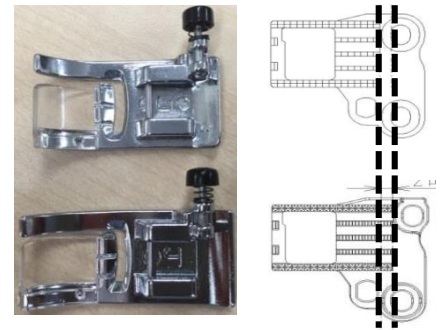


# Work Area

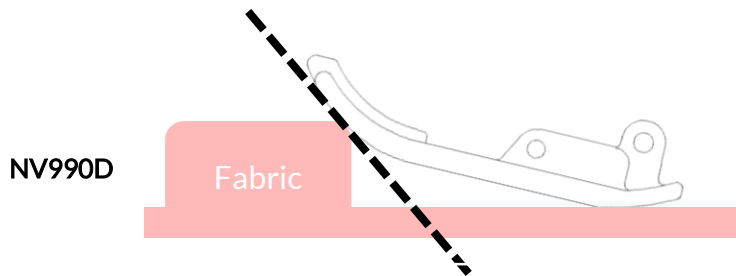
The work area has been enlarged  
from 5.3" x 3.9" to 6.2" x 4.1"



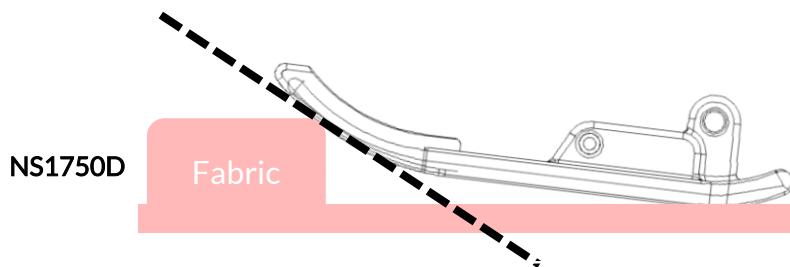
# Improved Sewing



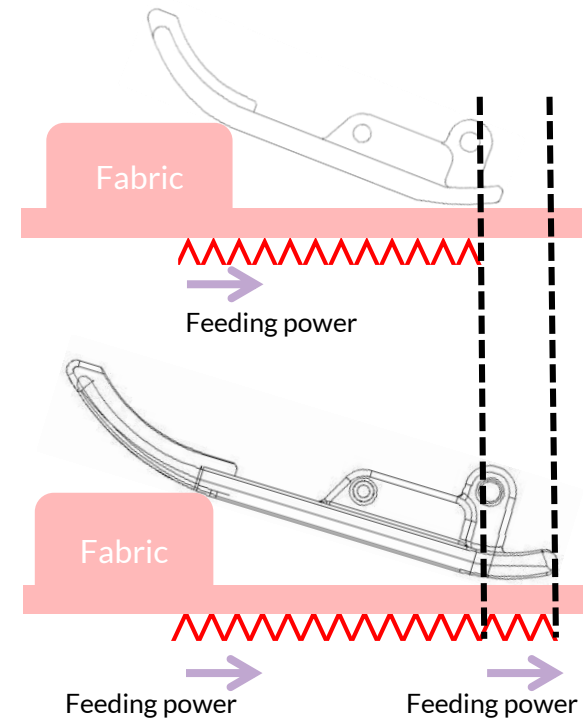
The longer J foot and feed dogs allow the fabric to move smoothly and evenly for a better sewing experience!



When the fabric touches the foot, the angle is high.



When the fabric touches the foot, the angle is low.



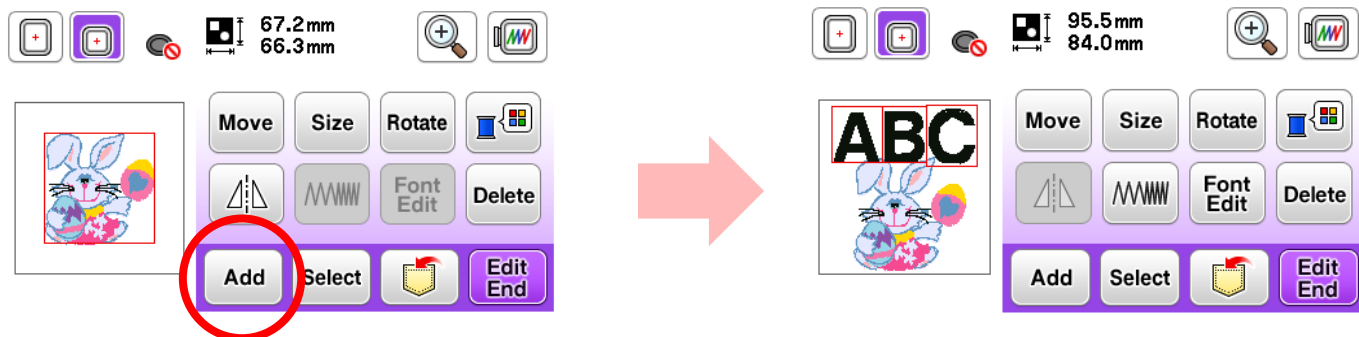
# Embroidery Designs

**Great news!** All patterns have been refreshed!  
In addition, all 45 Disney embroidery designs are brand new.



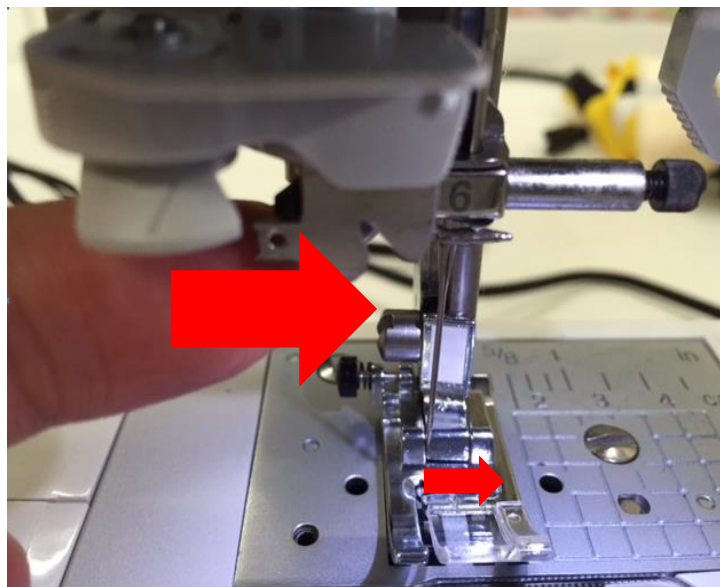
# Design Combination

Designs can now be combined simply by  
pressing the “Add” button



# Improved Needle Bar

**The needle bar has been improved.** On the previous model, the needle bar would easily move when touched. The new model has a strong and sturdy needle bar that does not shift when touched.



# Safety Feature

## Presser foot / needle change button

Now, when changing the foot or needle on your machine, you can select the following feature to lock all keys and buttons. This makes it much safer!

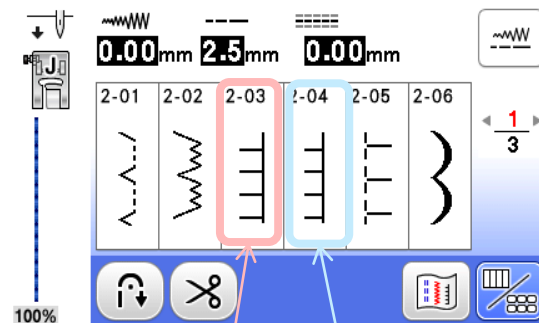
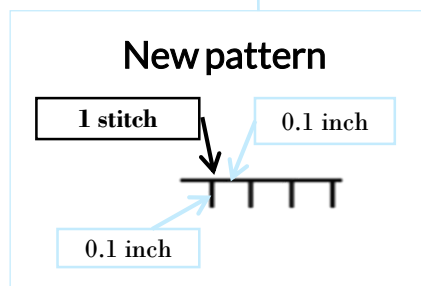
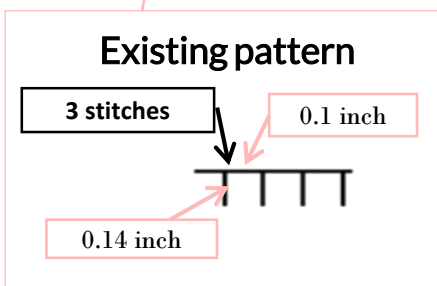




# New Applique Stitch

You spoke, we listened!

This stitch is lighter, simpler, and more square!



Existing pattern

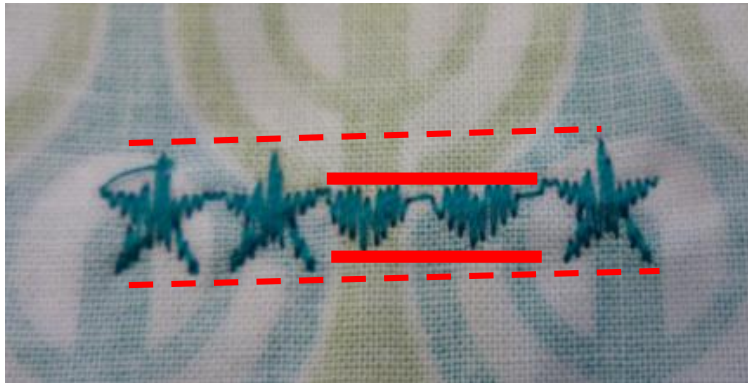
New pattern

# Improved Stitch

You spoke, we listened!

Previously, the heart stitch was smaller than the other patterns, so we improved the size and shape.

Current



Improved Stitch



# New Included Accessory

The NS1750D  
will include the  
**wide table** for  
extra work space!



# Comparison Chart

New Model

	NV990D	NS1750D
Maximum Sewing Speed (SPM)	710	<b>850</b>
MAX. Embroidery speed (SPM)	400	400
Work area size H x W mm (inch)	140 x 98 (3.9 x 5.3)	<b>162 x 103 (4.1 x 6.2)</b>
LCD Size	71 x 38 (2.8" x 1.5")	<b>82 x 45 (3.2" x 1.8")</b>
Display	Mono LCD with touch screen	<b>Color LCD with touch screen</b>
Feed dog point	7 (Normal type)	<b>7 (Long type)</b>
J foot	Normal type	<b>Long type</b>
Thread cutter button	YES	YES
Presser foot/Needle exchange key	NO	<b>YES</b>
Fixing needle bar	NO	<b>YES</b>
USB port	1 host	1 host
MAX. Embroidery area (W x H :MM)	100 X 100	100 X 100
Thread trimming function	NO	NO
Total number of built-in craft patterns (common + exclusive)	110	<b>125</b>
The number of Built-in craft patterns (common)	70	65
The number of Built-in craft patterns (exclusive)	40 Disney	<b>60 (45 Disney)</b>
Built-in Frame patterns	10 shapes X 12 stitch patterns	<b>10 shapes X 14 stitch patterns</b>
Built-in embroidery lettering fonts	6 Alpha	<b>10 (7 Alpha, 3 Japanese)</b>
Embroidery Pattern Drag and Drop	NO	<b>YES</b>
Design combination	NO	<b>YES</b>
The number of Built-in stitches (Number of Buttonhole)	168 (10)	<b>181 (10)</b>
Built-in lettering fonts	3 Alpha	<b>4 (3 Alpha, 1 Japanese)</b>
WIDE TABLE	-	<b>Included</b>